



Lixel L2 Pro

Precision Redefined



1mm
Point cloud
spacing



1cm ^[1]
Relative
accuracy



3cm ^[2]
Real-time
absolute accuracy



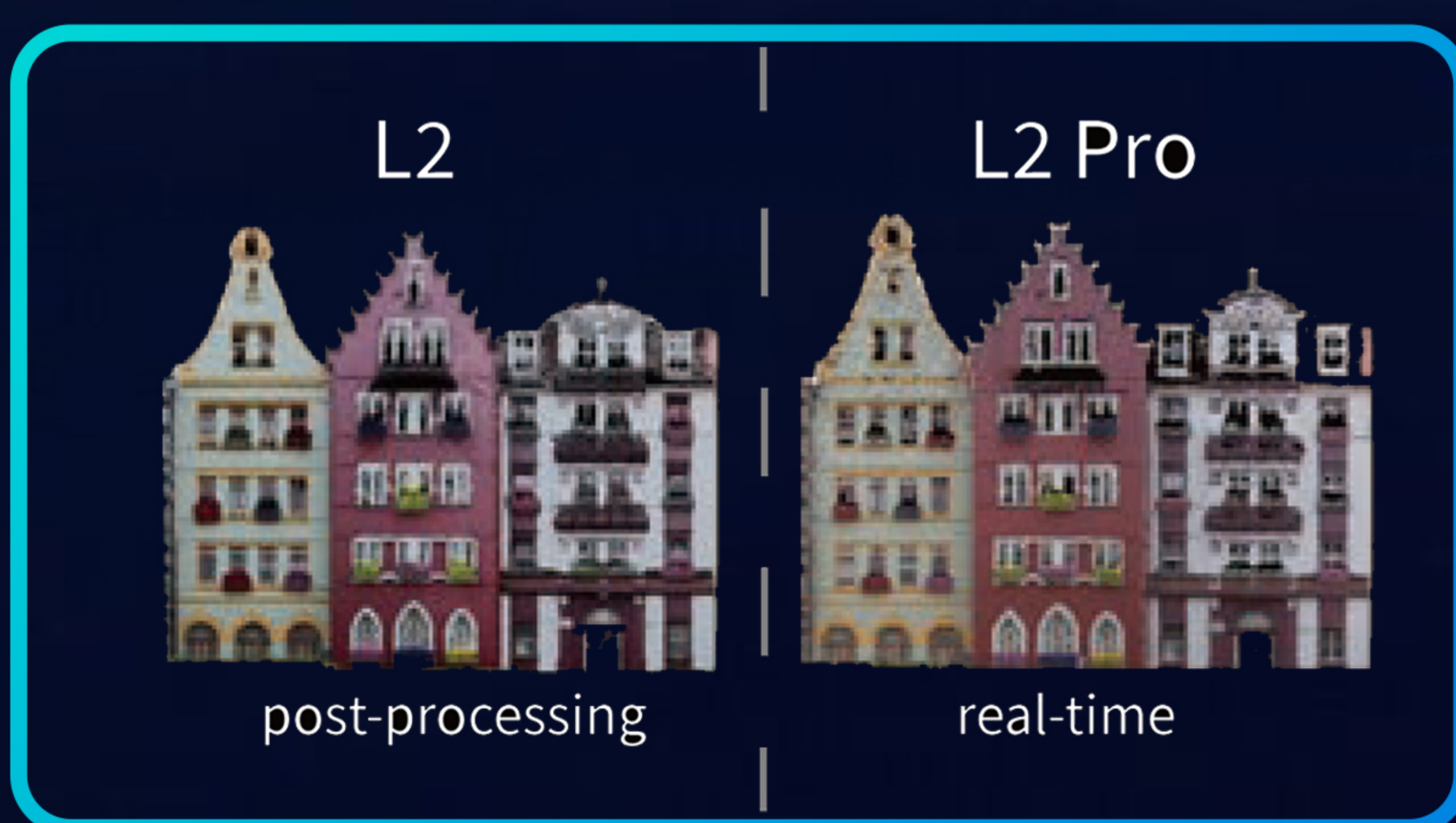
Real-time
true color
point cloud

Lixel L2 Pro >>>>

The new Lixel L2 Pro integrates LiDAR, visual, and IMU modules with AI, achieving breakthroughs in real-time data quality and usability. It's real-time point cloud data that rivals post-processed quality, ushering in the "zero post-processing era" for SLAM devices.



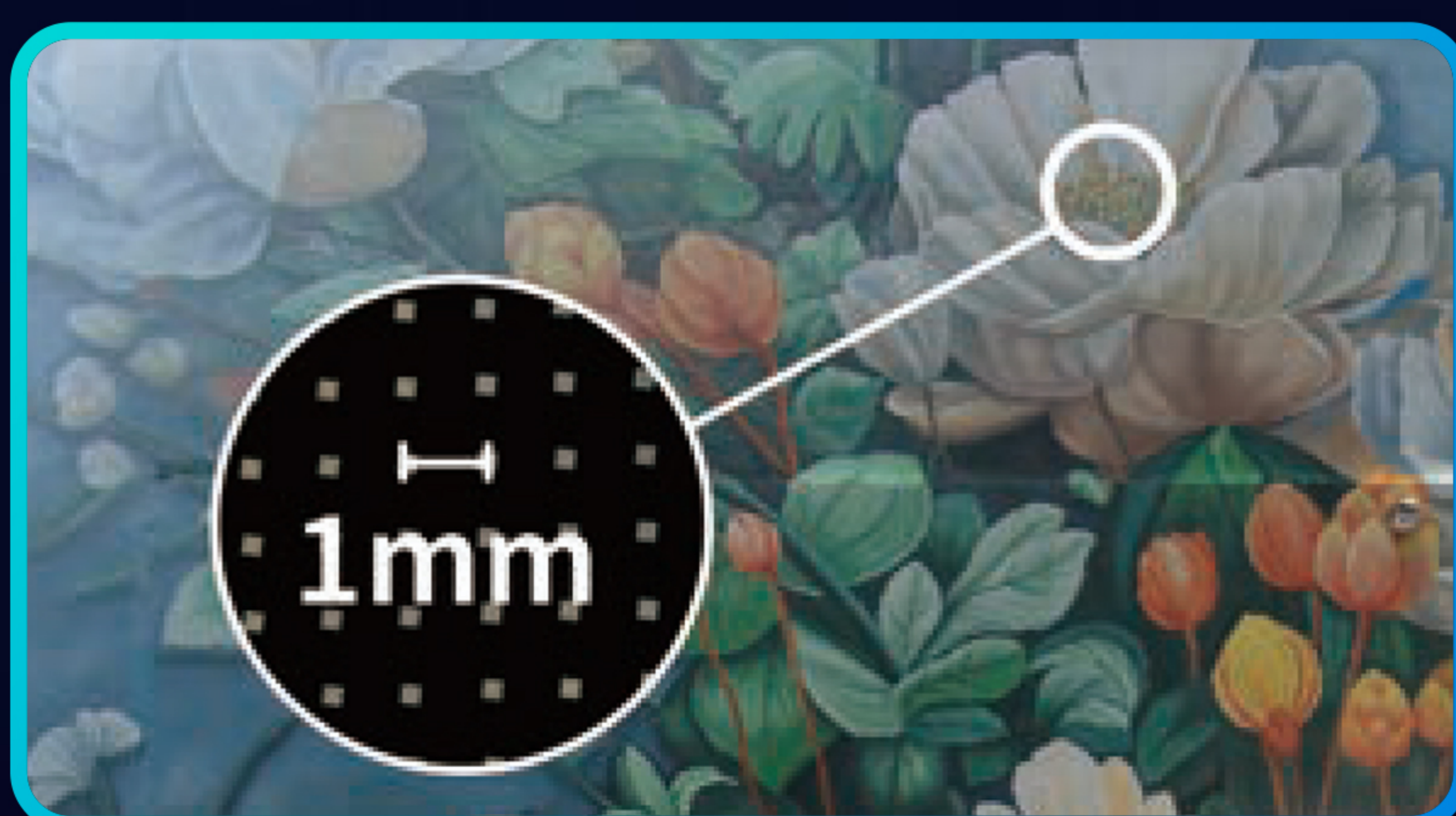
Features >>>>



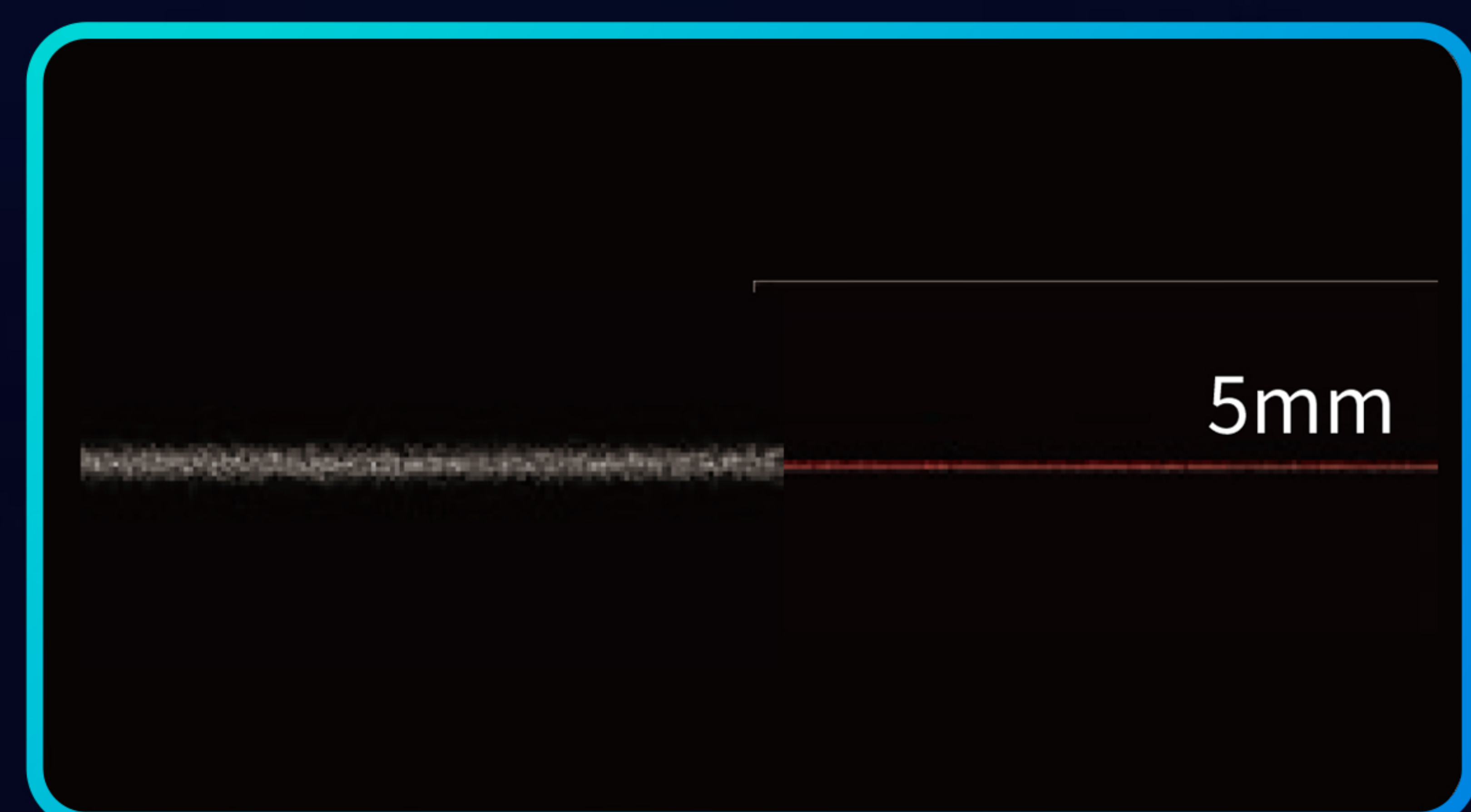
Real-time data comparable to post-processing quality
direct output for immediate mapping and modeling



Real-time absolute accuracy of 3 cm



Exclusive LixelUpSample™ point cloud algorithm
denser point clouds, sharper detail



5mm point cloud thickness
enhanced precision for mapping and line drawing

APPLICATION SCENARIOS



Topographic Surveying



Construction



Engineering



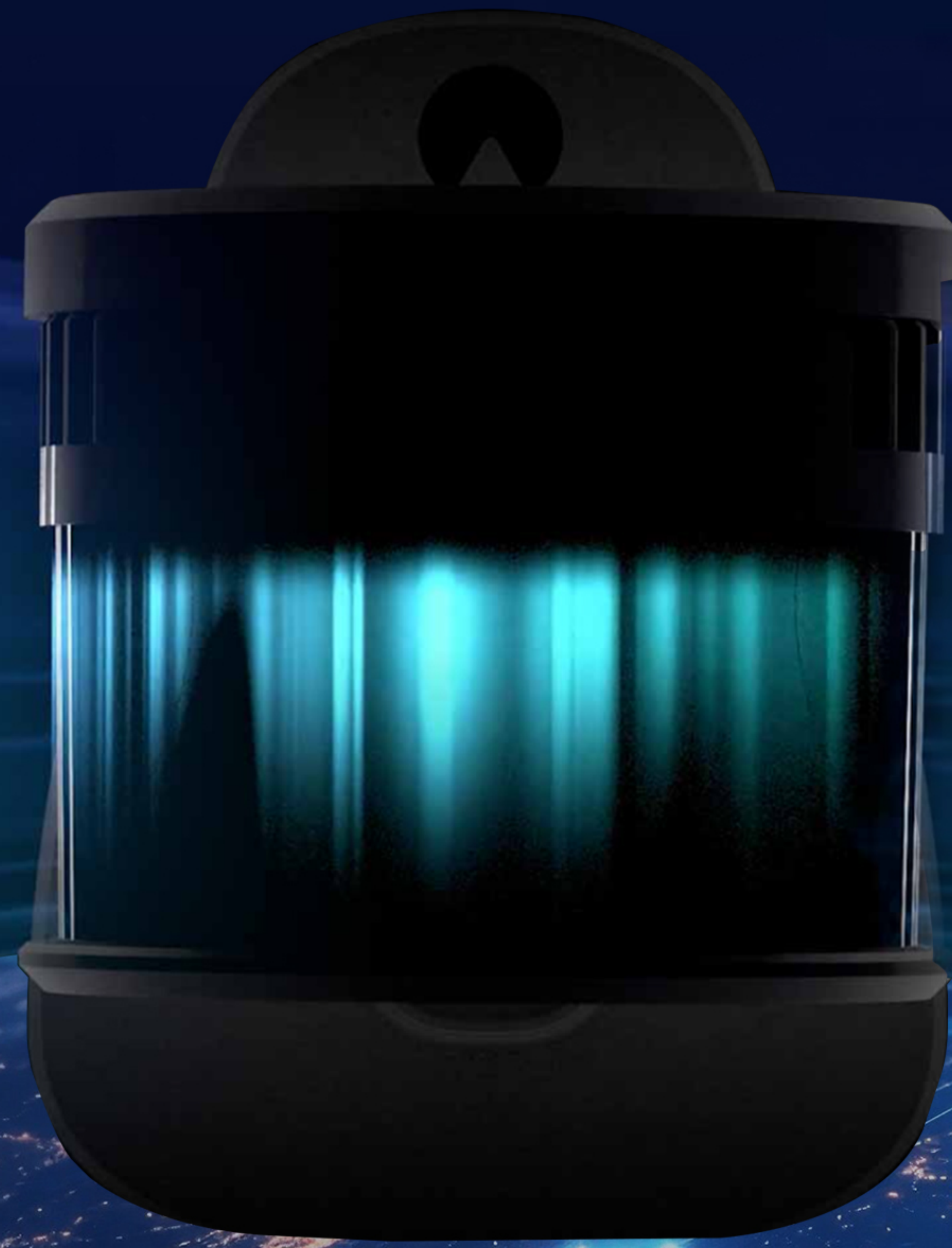
Agricultural and Forestry



Inspection and Maintenance



Film and Game Production



Software

APP



LixelGO

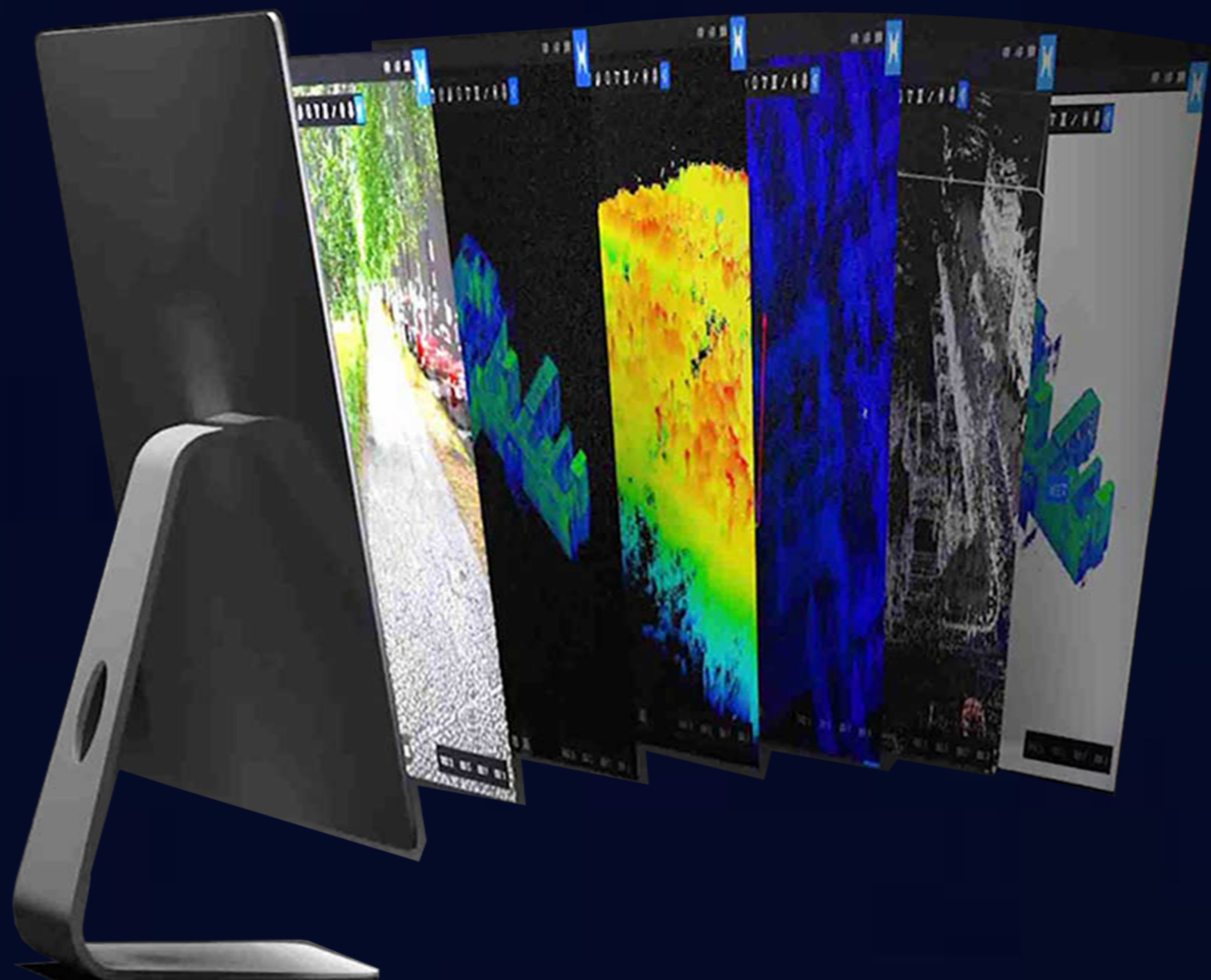
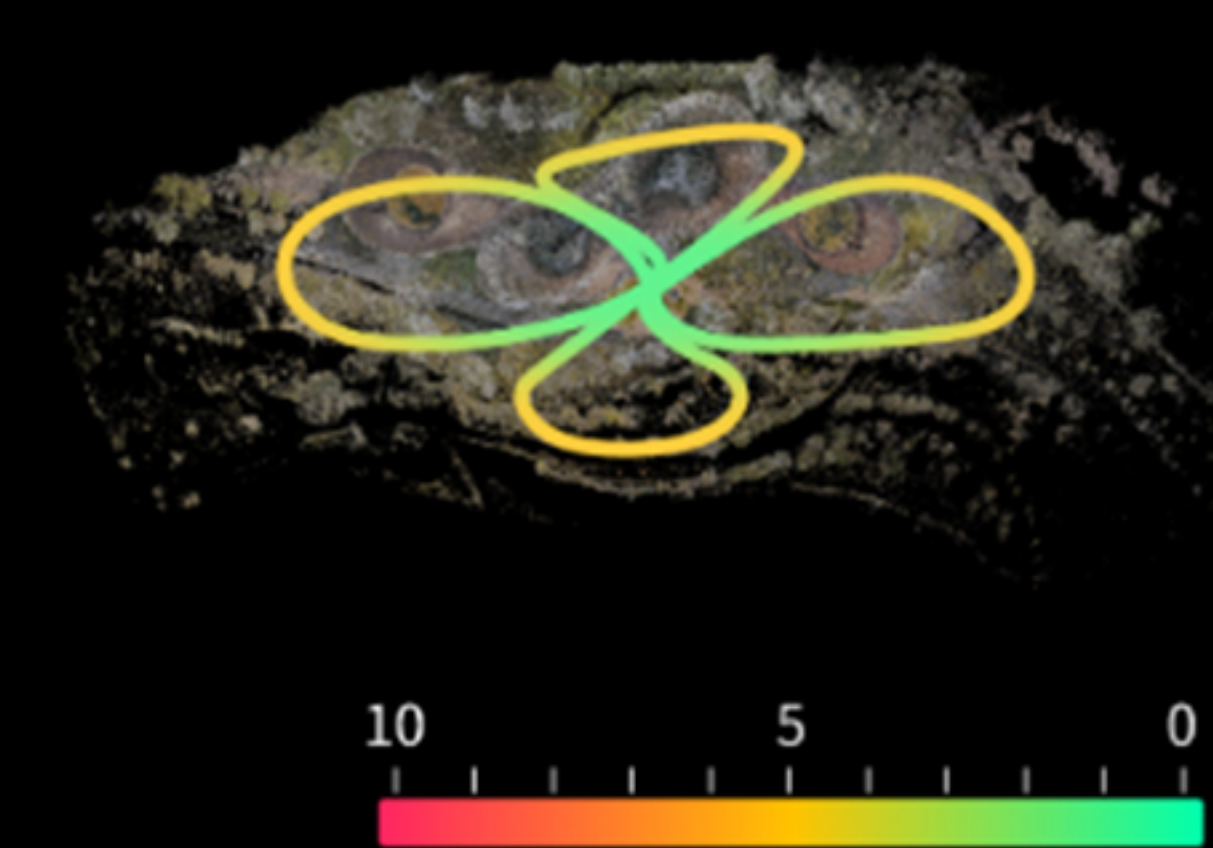
- Mobile-controlled workflow
- Real-time preview of collected data
- Monitor device status at a glance

< Return

TIME
2023 08 24 15:46:10

Mileage Data
1.5KM

PDF



PC



LixelStudio

- All-in-one 3D point cloud processing software
- Seamless viewing, editing, and processing
- Industry plugins

Specifications >>>>

System Parameters

Weight	1.7kg (without battery)
Size ^[1]	180mm×130mm×400mm
Outer Casing	Industrial-grade Aluminium
Power Consumption	<30W
Interfaces	USB 3.1 Gen2
Storage	1T SSD
Continuous Operation Time	90min
Wireless	Supports WiFi, Bluetooth:802.11a/b/g/n/ac, 2.4G Wifi 2412-2472MHz 5G2 Wifi 5180-5240MHz 5G8 Wifi 5745-5825MHz

Environment

Operating Temperature	-20°C~50°C
	-4°F-122°F
IP Rating	IP54

Functions

Visual Positioning	Supported
Real-time RGB	Supported
Real-time RTK Fusion	Supported

Output

Point Cloud Formats	.las .ply
Image Formats	.jpg

Accessories

Backpack with Stabilizing Arm	Dimensions: 60cmx60cmx15cm
	Weight: 2.5kG
Backpack with Padding	Dimensions: 55cmx35cmx25cm
	Weight: 2.7KG
Shipping case	Dimension: 42cm*34cm*18cm
	Weight with System: 6.6kg
2m Extension Pole	Supported
Mobile Phone Mount	Supported
Control Point Plate	Supported

Accuracy

Absolute Vertical/Horizontal Accuracy (RMSE) ^[2]	3cm
Real-time Relative Accuracy (RMSE) ^[3]	2cm
Processed Relative Accuracy (RMSE) ^[3]	1cm
Repeat Accuracy(RMSE) ^[4]	2cm
Point Cloud Thickness ^[5]	0.5cm
LixelUpSample™	Supported
LiDAR	Operating Range
	0.5m~120m 0.5m~300m
LiDAR Sensor	Class 1/905nm
Sensor FOV	360°x270°
Scanning Frequency	320,000 points/s
	640,000 points/s

Camera for Panoramic Images

Resolution	2x48 Megapixels
Focal Length	2mm
Aperture	F/2.0
CMOS	1/2"
Shutter	Rolling shutter
FOV	190°x190°

Camera for Visual Positioning

Resolution	1x1MP
Shutter	Global shutter
FOV	190°x119°

Battery

Voltage	14.4V
Capacity	46.8wh



[1]With handheld battery and GCP collection plate; [2]Refers to real-time/processed data. No RTK signal loss more than 100m
 [3]Distance between two points is less than 100m; [4]Two scans both with full RTK signal
 [5]Horizontal thickness of the point cloud within 10m of the travel path

GUANGZHOUALPHAGEO-INFO CO.,LTD

Address: Room 601, Building C, Runhui Science and Technology Park,
 Shenzhou Road, Huangpu District, Guangzhou 510663, Guangdong, China
 Website: <http://www.alphageo-info.com>
 E-mail: alphageoinfo@gmail.com
 Phone: +8618565149475